

Ş İ L E

K A B A K O Z R E S İ D E N C E S



NOBLE TREE



SE-ART MİMARLIK



NOBLE TREE
İNŞAAT A.Ş.



SE-ART MİMARLIK



All visual works are for promotional and informational purposes.





C O N T E N T S

| | | | |
|-----|----------------------------------|-----|--------------------------------------|
| 0 1 | A B O U T U S | 1 5 | I N T E R I O R F E A U T U R E S |
| 0 3 | P R O J E C T D E T A I L S | 2 7 | F L O O R P L A N S |
| 0 7 | G E N E R A L F E A T U R E S | 3 5 | C O M M O N F E A U T U R E S |
| 0 9 | F A C A D E S | 3 6 | L O C A T I O N |

NOBLE TREE

About Us

Our vision-Our mission

At **NOBLE TREE**, our vision is to redefine the essence of luxury living with the embrace of sustainability. We are committed to creating spaces that are not just homes but sanctuaries, blending opulence with eco-friendly designs. Our aim is to pioneer a future where luxury living is harmonious with the environment, ensuring a legacy of excellence and sustainability for generations to come.

Our mission is to craft unparalleled luxury villas that set the standard for design, comfort, and eco-conscious living. Each villa is a testament to our dedication to quality, incorporating LEED-certified standards to ensure energy efficiency, water conservation, and reduced carbon footprints. We are dedicated to providing a living experience that enriches life not only for our residents but also for the community around us. At Noble Tree, luxury and sustainability are intertwined, reflecting our commitment to a better, greener future.



NOBLE TREE



About Us

Our vision-Our mission

Since our inception in 1991, we have embarked on our journey with a commitment to innovation and a worldview that emphasizes cohesive working principles. We set ourselves apart as hands-on contributors, not mere supervisors, bringing together a formidable ensemble of culinary experts in the business's kitchen, trusted stalwarts within the industry, and master craftsmen with a wealth of experience, alongside adept technical managers, visionary architects, and innovative engineers. This diverse and skilled team has been instrumental in spearheading and leaving our distinct signature on numerous construction and design projects.

At **SE-ART Architecture**, the fusion of art and innovation illuminates our path forward. We champion the philosophy that true design brilliance lies in simplicity, a principle that guides our creative process. Our approach is always forward-looking, ensuring that each project not only meets but exceeds the expectations of our clients and stakeholders, setting new standards in the architectural realm.



SE-ART MİMARLIK



Ş İ L E K A B A K O Z

R E S I D E N C E S

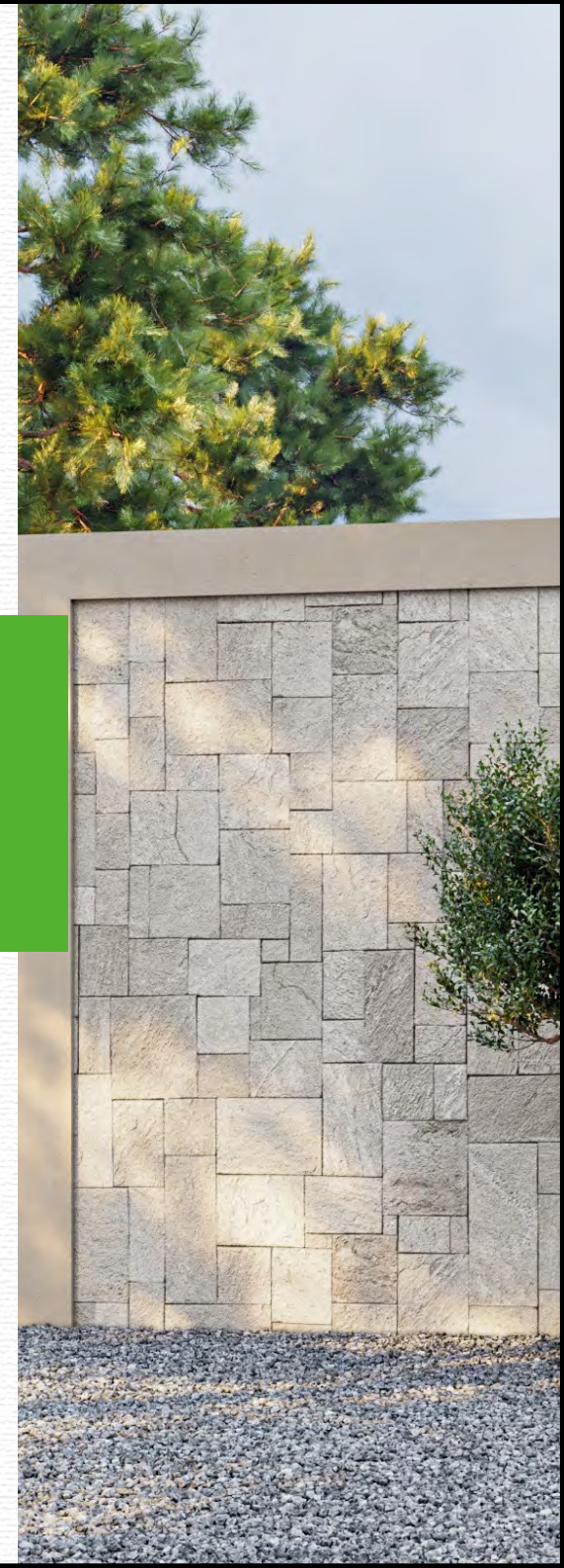
Project Details

The **Şile Kabakoz Residences** project is an exquisite ensemble of 7 boutique homes across 4 architecturally sophisticated blocks. Gear up for a prestigious lifestyle in sync with nature, where each residence comes with its own uniquely sized garden for an idyllic outdoor experience.

Distinguished as the region's first and only LEED Platinum-certified building, Şile Kabakoz Residences are crafted to excel in energy efficiency, water savings, and promoting a health-focused environment. This design philosophy aims to sustain the essential connection between humans and the natural world.

The project introduces a suite of luxurious features including a green home concept that blends seamlessly with the environment, advanced smart home technology for autonomous energy production, sustainable development solutions for a greener tomorrow, and spacious designs with high ceilings. Personalized to enhance your living experience, each villa offers exclusive amenities like a private pool and fire pit, merging luxury with everyday needs and presenting you with a distinguished new start.

The architectural expertise in the project reflects the synergy and refined craftsmanship of the partnership between **SE-ART Architecture** and **Noble Tree**, delivering a level of sophistication and attention to detail that promises an unmatched living experience for those in pursuit of the extraordinary.





Ş İ L E K A B A K O Z
R E S İ D E N C E S

Leed Platin Certification



Ş İ L E K A B A K O Z R E S I D E N C E S

Leed Platin Certification

The **LEED** (Leadership in Energy and Environmental Design) certification is a globally recognized symbol of excellence in **green building**. Developed by the U.S. Green Building Council (USGBC) in 1998, it stands as the premier benchmark for environmentally friendly construction and operation. This comprehensive rating system evaluates buildings on multiple green dimensions, including sustainable site development, water savings, energy efficiency, materials selection, waste reduction, and the quality of the indoor environment, alongside innovative strategies and the project's impact on its immediate region.

To achieve **LEED** certification, a project must initially meet a set of fundamental prerequisites that establish a baseline for environmental performance. Following this, project teams can tailor their certification efforts by selecting from a variety of credits that align with their specific sustainability goals. The accumulation of points from these credits determines the project's certification level, illustrating its commitment to a greener, healthier world.



Ş İ L E K A B A K O Z R E S I D E N C E S

The criteria determining the level of **LEED** certification are as follows:

- Location and Transportation: Encourages the efficient use of urban land to minimize impact on the environment.
- Sustainable Sites: Aims for the optimum density in land use to preserve natural resources and habitats.
- Water Efficiency: Focuses on reducing water consumption both inside and outside the building, promoting water conservation practices.
- Energy and Atmosphere: Targets energy savings as a major expense, emphasizing renewable energy and efficiency improvements to minimize greenhouse gas emissions.
- Materials and Resources: Advocates for the use of recycled, reclaimed, and locally sourced materials to reduce environmental impact and support circular economy principles.
- Indoor Environmental Quality: Ensures the provision of natural light, scenic views, and superior indoor air quality for the health and well-being of occupants.
- Integrative Process: Encourages the adoption and tracking of targeted sustainability strategies throughout the project lifecycle.
- Innovation in Design: Supports innovative ideas that push the boundaries of traditional green building concepts.
- Regional Priority: Allows projects to earn additional points for addressing the unique environmental concerns and priorities of their specific region.



Ş İ L E K A B A K O Z R E S İ D E N C E S

The **LEED** certification system is based on a scoring system. The certification level is determined by the total points earned. Across all LEED certification systems, a maximum of 110 points can be achieved.

- LEED Certified: Projects scoring a total of 40-49 points achieve "Certified" status,
- LEED Silver: Projects with a total of 50-59 points are awarded "Silver" certification,
- LEED Gold: Projects amassing 60-79 points are designated "Gold" certification,
- LEED Platinum: Projects scoring 80 points and above are rated at the "Platinum" level.

Şile Kabakoz Residences have successfully achieved the requisite points to be awarded the prestigious LEED Platinum certification.



General Features Of The Villa

GARDEN FLOOR:

Master bedroom featuring an en-suite bathroom for added privacy and convenience.

Additional versatile room, suitable for various uses.

A separate, well-appointed bathroom.

GROUND FLOOR:

A modern, fully-equipped kitchen designed for culinary enjoyment.

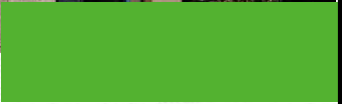
Expansive living room boasting an impressive ceiling height of 4.20 meters, creating an open, airy atmosphere.

Conveniently located bathroom for guests and family use.

LOFT FLOOR:

Luxurious master suite complete with a comprehensive bathroom, offering a private retreat within the home.





- *LEED PLATINUM Certification: Emphasizes the home's commitment to green living and sustainability.*
- *Green Home Concept: Integrates eco-friendly design principles across energy, water, and heating systems.*
- *High Sustainability Design: Showcases efficiency in energy, water, and thermal performance.*
- *Heat Pump & Solar Energy Use: Utilizes renewable energy sources for environmental conservation.*
- *Personalized Garden Spaces: Offers uniquely sized garden areas for each villa, enhancing outdoor enjoyment.*
- *Advanced Security System: Equipped with a comprehensive camera surveillance system for safety and peace of mind.*
- *Heat and Sound Insulation: Features Raynaers solutions for superior insulation, ensuring a quiet and comfortable living environment.*
- *Climate Control Systems: Maintains optimal indoor temperatures and air quality.*
- *Designer Kitchens and Bathrooms: Combines luxury with functionality in key living spaces.*
- *Smart Home Systems: Offers convenience and efficiency through technology.*
- *Underfloor Heating: Provides consistent and comfortable warmth throughout the home.*
- *Fireplace: Adds a cozy and inviting element to the living area.*
- *Wellness Facilities: Includes a fitness area, Turkish bath, sauna, spa, and pools enriched with salt and magnesium for health and relaxation.*
- *Design-Centric Living Spaces: Crafted with aesthetic appeal and functional design in mind.*

Ş İ L E K A B A K O Z
R E S I D E N C E S

Facades

Introducing a New Vision
for *Sustainable Living*...





ESCAPE THE
HUSTLE AND
BUSTLE,
WELCOME TO A
SERENE
NATURAL
LIFESTYLE.

Just for you...



BUILT UPON RUGGED
ROCKY TERRAIN, SOLID AND

„drable ground“

14



Ş İ L E K A B A K O Z R E S I D E N C E S



TO A LIFE FULL
OF COMFORT

16



„hello“





ŞİLE KABAKOZ RESIDENCES

BLOCK A

Entrance and Hallway



All visual works are for promotional and informational purposes.

A bright living room, sunlit kitchen, practical rooms, lush garden, and much more await you at **ŞİLE KABAKOZ RESIDENCES.**

Ground Floor Bathroom



Ş İ L E K A B A K O Z R E S I D E N C E S B L O C K A

Kitchen





Ş İ L E K A B A K O Z R E S I D E N C E S

B L O C K A

Living Room



Spaces designed with emphasis on aesthetics and quality.



Master Bedroom





Master Bathroom



Peacefully
and
Joyfully

*With
Confidence...*



Ş İ L E K A B A K O Z R E S I D E N C E S

B L O C K B

Living Room



Our residences are meticulously designed to offer you modern aesthetics and every conceivable comfort, tailored to meet all your needs.



Ş İ L E K A B A K O Z R E S I D E N C E S

B L O C K B

Kitchen

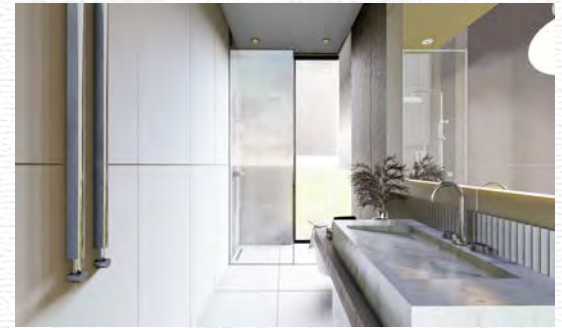




Ş İ L E K A B A K O Z R E S İ D E N C E S
B L O C K B

33

Ground Floor Bathroom

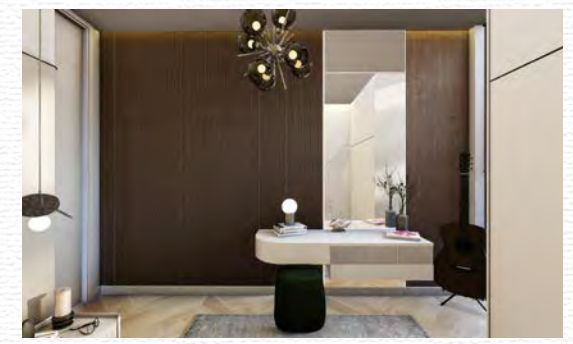


Garden Floor Bathroom



Ş İ L E K A B A K O Z R E S I D E N C E S
B L O C K B

Garden Floor Room





Garden Floor Bedroom



Every
detail

*Stylish
Designed...*



Master Bedroom



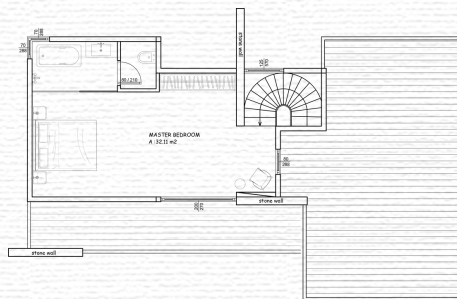
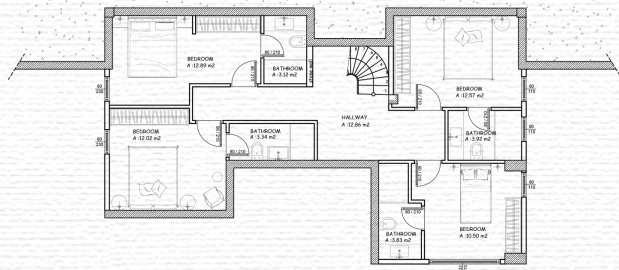
A life at the
center of
Tranquility..



Ş İ L E K A B A K O Z R E S İ D E N C E S

B L O C K A

Floor Plans



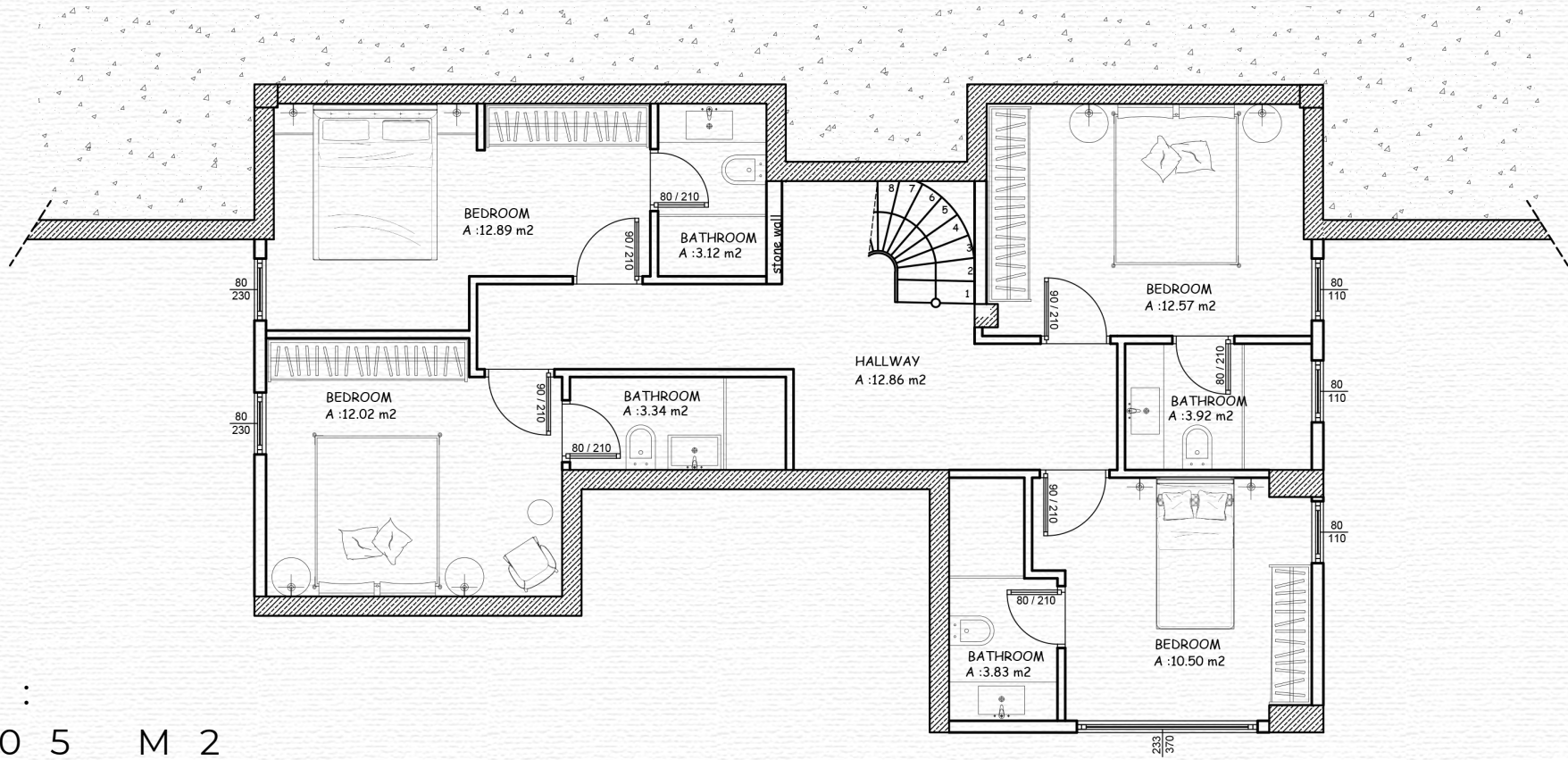
Block A offers exclusive ensuite bedrooms, meticulously designed bathrooms, bright and spacious kitchens, cozy living rooms with fireplace, and 21.95 m² terrace annexes exclusively for Block A residents. Additionally, there's a magnificent pool, fire pit, and a 47.35 m² social area for endless entertainment throughout the day.

At the garden level of Block A, you'll find 4 ensuite bedrooms, each offering privacy with its own private bathroom.

The entrance level boasts a carefully designed communal bathroom, a sunlit spacious kitchen, and a living room with a fireplace, blending luxury and comfort with its 4.20-meter-high ceilings.

The loft floor features a master bedroom with a dressing area, a bathtub-equipped bathroom for relaxation, and a terrace that brings the sky to your home.

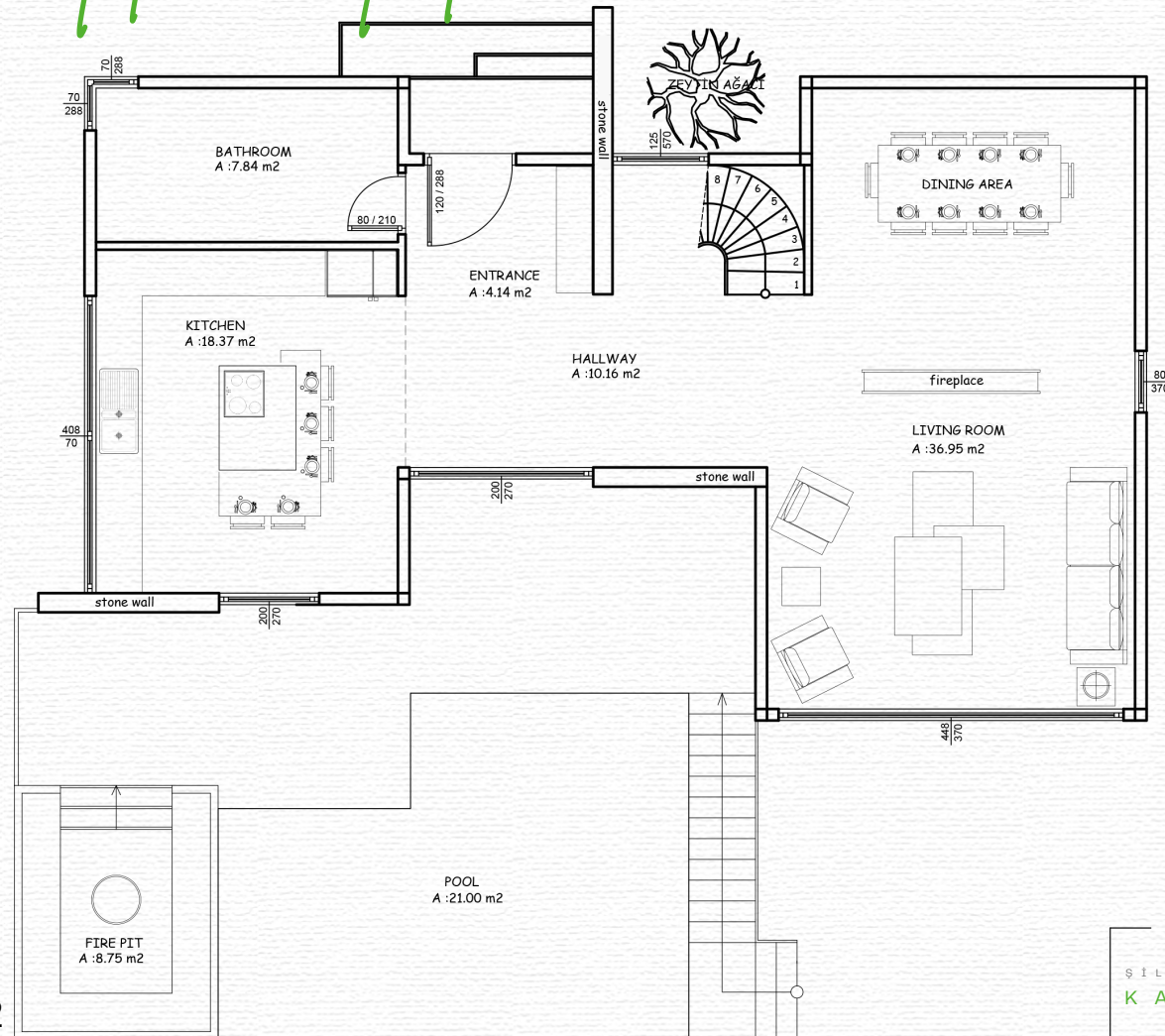
Garden Floor Plan



NET :
75.05 M²

GROSS :
92.67 M²

Ground Floor Plan



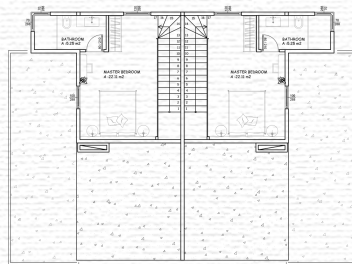
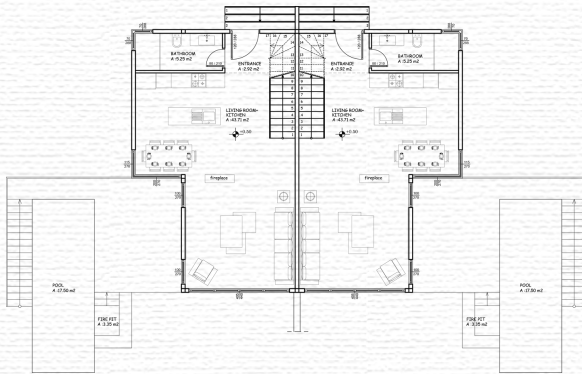
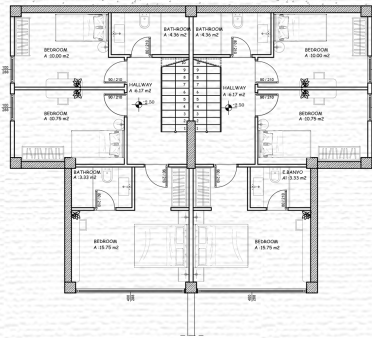
NET :
166.19 M²

GROSS :
184.40 M²

Ş İ L E K A B A K O Z R E S I D E N C E S

B L O C K B

Floor Plans



Block B has been designed to accommodate multiple residences within the block. Each residence features versatile rooms, ensuite bedrooms opening onto lush gardens, stylish communal bathrooms, bright kitchens with pool views, and cozy living rooms with fireplaces. Additionally, each residence offers a private, magnificent pool and a fire pit, providing a total of 89.50 m² of social space, allowing you to leave behind all the hustle and bustle of the city and embrace a serene lifestyle.

On the garden level of Block B, for each residence, you'll find 1 ensuite bedroom opening onto the garden, 1 communal bathroom, and 2 rooms that you can customize according to your needs.

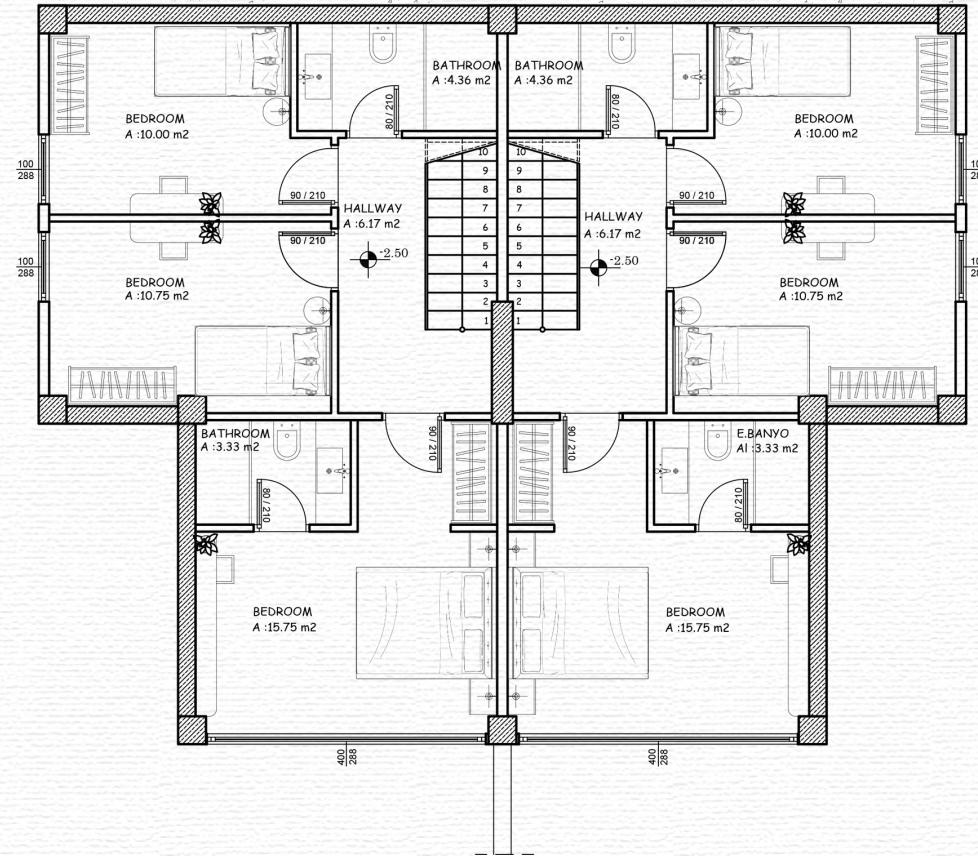
The ground floor boasts a chic communal bathroom, a light-filled open-concept kitchen adorned with modern decorations, and a magnificent living room with high ceilings and a unique fireplace feature.

The loft floor comprises 1 master bedroom where you can sleep peacefully all night, along with its ensuite bathroom.

Ş İ L E K A B A K O Z R E S I D E N C E S

B L O C K B

Garden Floor Plan



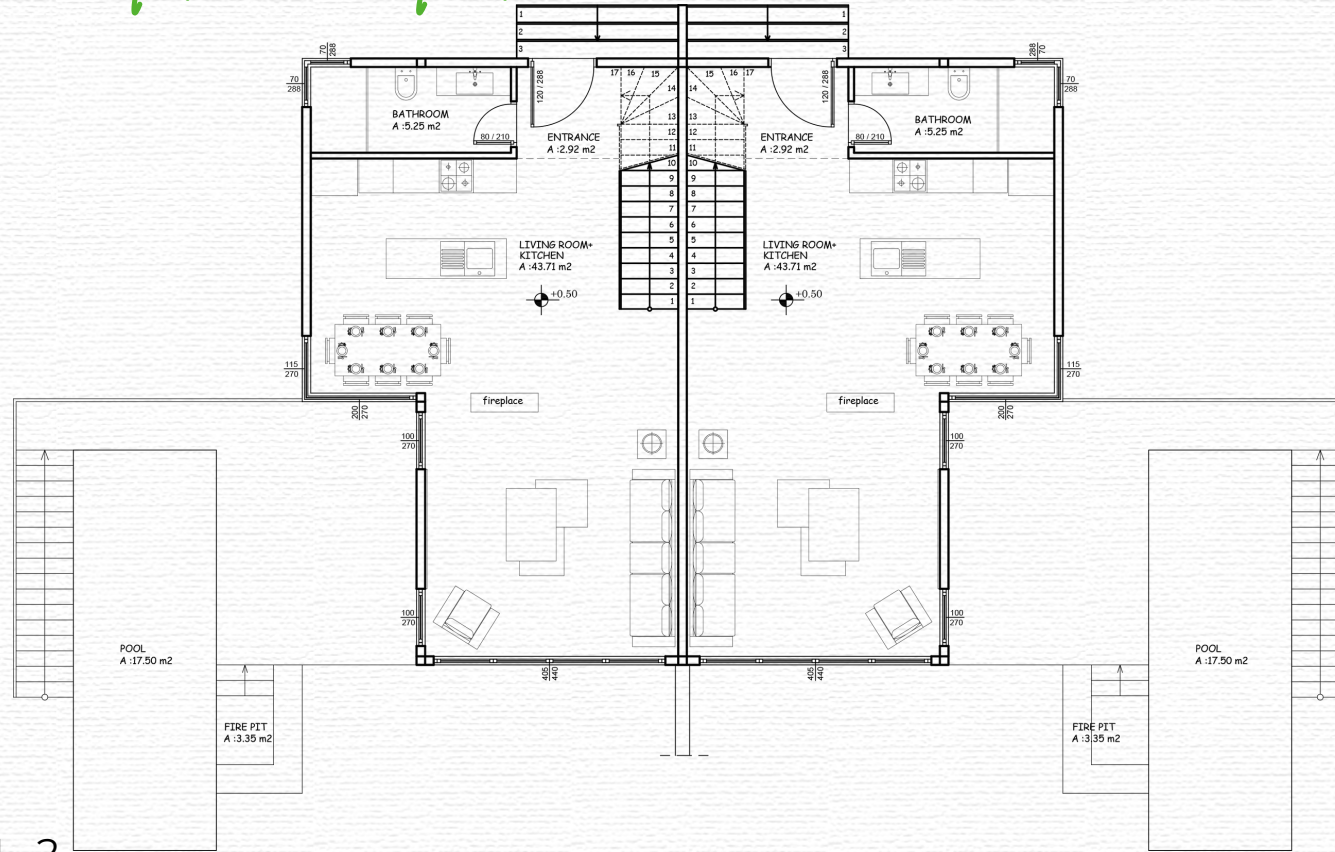
NET :
100.72 M²

GROSS :
122.58 M²

Ş İ L E K A B A K O Z R E S I D E N C E S

B L O C K B

Ground Floor Plan



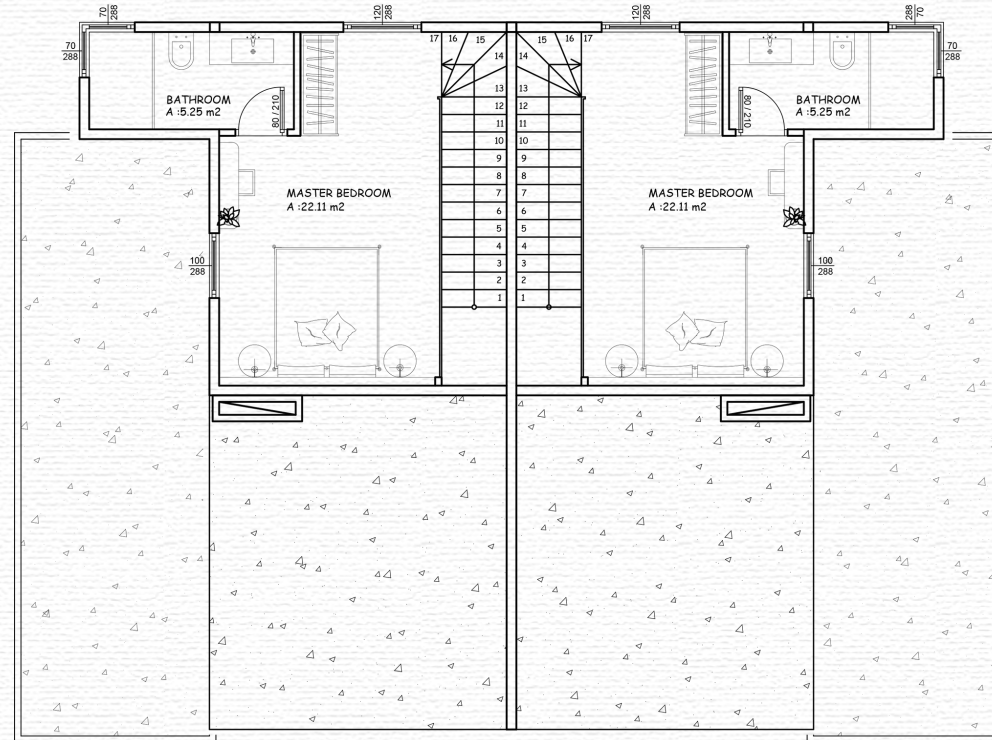
NET :
1 9 3 . 2 6 M 2

GROSS :
2 1 2 . 0 8 M 2

Ş İ L E K A B A K O Z R E S I D E N C E S

B L O C K B

Left Floor Plan



N E T :

3 3 . 6 6 M 2

G R O S S :

4 9 . 3 2 M 2

Common Features

- LEED PLATINUM CERTIFICATION



- OPEN PARKING FACILITY



- SECURITY SYSTEMS



- SMART HOME SYSTEMS



- SUSTAINABLE SYSTEMS



- FITNESS AREA



- OPEN POOL AND FIRE PIT



- TURKISH BATH, SPA, SAUNA



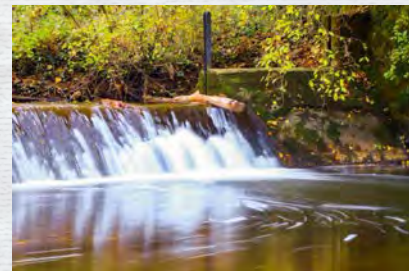
Ş İ L E K A B A K O Z R E S I D E N C E S

Location

Şile, with its picturesque coastline stretching over 60 kilometers, boasts charming villages, pristine beaches, and rich historical heritage. From the azure waters of the Black Sea to the golden sands of its blue flag beaches, Şile is a treasure trove of natural beauty and cultural wonders waiting to be explored.

Nestled just 70 kilometers (40 minutes) away from Istanbul's bustling center, Kabakoz village beckons travelers with its tranquil ambiance and breathtaking vistas. As one of the 50 villages under Şile's embrace, Kabakoz has emerged as a coveted destination for tourists seeking refuge in nature's embrace while staying close to the vibrant city life of Istanbul.

Discover Kabakoz Beach, a hidden gem nestled between rolling hills, offering crystal-clear waters, soft sandy shores, and an atmosphere of serenity and peace. Whether you're looking to soak up the sun, unwind with a leisurely stroll along the coastline, or simply bask in the tranquility of nature, Kabakoz Beach promises an unforgettable escape from the hustle and bustle of everyday life.



Ş İ L E
K A B A K O Z R E S İ D E N C E S

*We've unlocked the gates to a
peaceful
and joyous natural way of life, just
for
you to embrace.*



NOBLE TREE



SE-ART MİMARLIK

Ş İ L E

K A B A K O Z R E S İ D E N C E S



Where?



KURUÇEŞME ST. NO:17
KABAKOZ
ŞİLE/İSTANBUL



QR OKUTUNUZ.

Ş İ L E

K A B A K O Z



R E S I D E N C E S



Head Office



Çavuş Dist.

Çayırlar Str.

No:129-3 Office;1-2

Şile/İstanbul/Türkiye



info@nobletree.com.tr



0(216)766 59 19



0(530)388 06 25

seart@seartmimarlik.com.tr

0(216)451 50 53

www.seartmimarlik.com.tr



Head Office



Çavuş Dist.

Cumhuriyet Str.

No:94-1

Şile/İstanbul/Türkiye